

TEAMBUILDING

EXPERIENCE

SIGNATURE
CULINARY
CLASSES

MIXOLOGY 101

WACKY GOLF

MURDER
MYSTERY

ESCAPE ROOM

GAME SHOW

& MORE

Normandy Farm

BLUE BELL
Country Club



CONTENTS

2

WELCOME

3-4

CULINARY CLASSES



5

WINE DINNER

6

MIXOLOGY101

7

WACKY GOLF

8

LAWN GAMES

9

MURDER MYSTERY

10

GREENOLOGY



11

AXE THROWING

12

ESCAPE ROOM

13

GAME SHOW

14-15

ARTISTIC EXPRESSIONS



WELCOME

WHERE THERE'S A WHISK, THERE'S A WAY

TEAMBUILDING



At Normandy Farm and Blue Bell Country Club, we pride ourselves on the variety of fun yet educational teambuilding activities.

Our talented staff and professional partners will guide you to promote leadership skills, cooperation, strategy, and the tenacity needed to exceed in the work force. These completely "hands-on" instructional classes may be held anytime during the day or evening and can be conveniently scheduled to meet your time table. Ask us about our variety of teambuilding offerings.

Signature

COOKING CLASSES

CULINARY

FACILITATED BY OUR AWARD-WINNING
CULINARY TEAM

3 HOUR EVENTS / MINIMUM: 15 GUESTS

Your guests will enter the room and be offered a beer and wine bar, as well as non alcoholic beverages (iced tea, lemonade and water) with hors d' oeuvres for about 20-30 minutes. One of our chefs will welcome the group and explain the culinary team building exercise. Guests will break into teams of 8-10 and each team will create a different dish. Once the teams are done prepping the food, off to the kitchen it goes! Teams will all be able to taste each other's creations as they dine on the extensive buffet.

Select your dinner buffet theme:

PAN ASIAN COOKING

PRICING: \$110 per person

BBQ GRILLING *Weather & Season Permitting*

PRICING: \$92 per person

THE FARMER'S MARKET *Eat Healthy & Learn How*

PRICING: \$110 per person

ITALIAN KITCHEN

PRICING: \$89 per person

TASTE OF THE ISLANDS

PRICING: \$89 per person

COOKING FOR A CAUSE

PRICING: \$114 per person



Make a variety of homemade casseroles with your team that will be donated to Manna on Main Street in Lansdale! Event also includes: Chef's Choice Dinner Buffet- 4 entrees (fish, chicken, beef & vegetarian), seasonal starch & vegetable & soup in addition to items listed below.

*** Culinary teambuilding events include the following:**

- Chef's choice of 3 hors d' oeuvres (2 hot, 1 cold)
- Bruschetta and hummus
- Pita bread, garlic bread, crudité
- Open bar offering beer, wine, soda, water
- Chef's choice dessert

*** Ask your sales manager about food & beverage enhancements. All prices and minimums are plus tax & service charge.**





Signature

COOKING CLASSES

BAKESHOP

FACILITATED BY OUR AWARD-WINNING
PASTRY TEAM
3 HOUR EVENTS / MINIMUM: 15 GUESTS

Take your bakeshop creations home!

BAKER VS. FAKER

Compete against Chef Sam's artful cookie decoration. Who is the baker and who is the faker?

PRICING: \$70 per person

DESSERT FLATBREAD CHALLENGE

Stretch dough to your favorite shape and top with sweet confections. The winner has the best combination of flavors for the perfect "bite"!

PRICING: \$70 per person

MAKE-A-CAKE CHALLENGE

Decorate your own tiered 6" cake like a pro and be judged for appearance, taste, and originality

PRICING: \$75 per person

PRETZEL MAKING CLASS

Your group will break into teams and create delicious Philadelphia style soft pretzels. Once baked, guests will be able to choose their own pretzel flavors.

PRICING: \$70 per person

*** Bakeshop teambuilding events include the following:**

- Chef's choice of 3 hors d'oeuvres (2 hot, 1 cold)
- Bruschetta and hummus
- Pita bread, garlic bread, crudités
- Open bar offering beer, wine, soda, water
- Chef's choice dessert

*** Ask your sales manager about other food & beverage options and enhancements. All prices and minimums are plus tax & service charge.**



Signature
COOKING CLASSES

BAKESHOP

FACILITATED BY OUR AWARD-WINNING
PASTRY TEAM
3 HOUR EVENTS / MINIMUM: 15 GUESTS



MAKE-YOUR-OWN SORBET OR GELATO

Break into teams, choose your flavors, and use dry ice to create your own sorbet or gelato from scratch. Teams will be judged on their presentation and flavor!

PRICING: \$50 per person

*** Bakeshop teambuilding events include the following:**

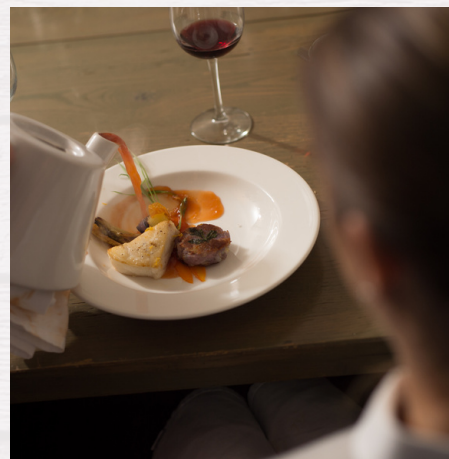
- Chef's choice of 3 hors d' oeuvres (2 hot, 1 cold)
- Bruschetta and hummus
- Pita bread, garlic bread, crudités
- Open bar offering beer, wine, soda, water
- Chef's choice dessert

*** Ask your sales manager about other food & beverage options and enhancements. All prices and minimums are plus tax & service charge.**



THE *Normandy* EXPERIENCE

WINE DINNER



Our culinary team cordially invites you to our Wine Dinner experience. The bounties of the season come to life on your plate as you taste signature courses from our seasonal menu. A sommelier will guide you through each dish, paired with hand selected wine. Our sommelier will also serve as your maître de cérémonie throughout the experience, as your team learns about and partakes of the vineyards and regions of the evening.

CHOOSE YOUR MENU

5-Course
(4 wine-paired courses + 1 intermezzo)
\$100 per person
(plus tax & service charge)

6-Course
(5 wine-paired courses + 1 intermezzo)
\$125 per person
(plus tax & service charge)

CHOOSE YOUR VENUE

"the farmer's daughter
Wine Room
Minimum: 8 Guests | Maximum: 15 Guests

Blue Bell Country Club
Minimum: 8 Guests | Maximum: 20 Guests

Monday - Thursday Availability
It is recommended that the event be booked
a minimum of 2 weeks prior to the event.

MIXOLOGY 101



SPECIFICATIONS

3 HOUR EVENT

MINIMUM: 12 GUESTS

PRICING: \$68 PER PERSON

VALID PHOTO ID MUST BE PRESENTED

LET'S SHAKE IT UP!

This program is a great way to get your group working together on a fun and new skill. Get social and learn expertise that will also enhance anyone's ability to entertain at home. We include every ingredient, and give you hands on training. You'll learn how to mix it like the pros. Each group will be split into smaller teams and be given all the tools of a full bar. We even add a few competitive drink making contests.

We can tailor this teambuilding to fit your needs as well. We can incorporate a team building session into a dinner event or as a breakout session throughout the day.

BY OUR MIXOLOGIST AT

the farmer's daughter

* Mixology teambuilding events include the following:

- Chef's choice of 3 hors d'oeuvres (2 hot, 1 cold)
- Bruschetta and hummus
- Pita bread, garlic bread, crudités
- Open bar offering beer, wine, soda, water
- Chef's choice dessert

* Ask your sales manager about other food & beverage options and enhancements. All prices and minimums are plus tax & service charge.

BLUE BELL COUNTRY CLUB
presents

WACKY GOLF



PLAY A-ROUND

Get your team out of the office and onto the course at Blue Bell Country Club for this fun-filled team building option! A member of our professional golf staff will provide golf instruction and tips paired with friendly competition and target practice. Please note: This is an event for all athletic abilities and golf skill levels. The main goal is to have fun, overcome challenges, and of course enjoy the outdoors!

FACILITATED BY THE BLUE BELL
COUNTRY CLUB PROFESSIONAL STAFF
2-3 HOUR EVENT
MINIMUM: 12 GUESTS | MAXIMUM: 30 GUESTS
PRICING: \$80 PER PERSON

***Wacky Golf teambuilding events include the following:**

- Chef's choice of 3 hors d' oeuvres (2 hot, 1 cold)
- Bruschetta and hummus
- Pita bread, garlic bread, crudités
- Open bar offering beer, wine, soda, water
- Chef's choice dessert



*** Ask your sales manager about other food & beverage options and enhancements. All prices are plus tax & service charge.**

LAWN GAMES

Add them to your event or create a lawn game team building!



Lawn games aren't just for kids! This year, don't just scroll your warm weather days away on your device! It's about time we take back the pure enjoyment of this season that we wait all year to experience.

Recent studies have shown that engaging in playful activities through adulthood can help lower stress, improve cognitive functions, and build social bonds with others. Leave the technology aside and add our games to your special occasion! Create an outdoor BBQ experience with a variety of lawn games plus food and beverage packages.

LAWN GAMES

Corn Hole

Giant Jenga

Ladder Ball

Kan Jam

Bocce Ball

CREATE A LAWN GAME TEAM BUILDING OR EVENT

6 Lawn Games / Rental Fee: \$600

Enjoy the following food & beverage package at \$40 per person, or ask your sales manager about BBQ selections, plated meals and other food & beverage enhancements.

- Chef's choice of 3 hors d' oeuvres (2 hot, 1 cold)
- Bruschetta and hummus
- Pita bread, garlic bread, crudités
- Open bar offering beer, wine, soda, water
- Chef's choice dessert

Prices are plus tax & service charge.



GREENOLOGY IN THE GARDEN



Terrarium Teambuilding

FACILITATED BY GREENOLOGY
ORGANIC LIVING

1.5 HOUR EVENTS / MINIMUM: 10 GUESTS

PRICING: \$42 PER PERSON FOR 5-6" Glass

PRICING: \$52 PER PERSON FOR 7-8" Glass



Plants are the best form of therapy! As we move towards beautiful days ahead, we are overly inspired to offer our newest teambuilding: Crazy for Cactus Terrarium Making Workshop. In this creative and fun class, you will be crafting a beautiful, artistic glass garden. No gardening experience necessary! Cactus Terrariums are perfect for those who often forget to water their plants, but love a little green in their home.

Time Frame of Teambuilding:

1 ½ Hours + the option to add on our Cocktail Reception Package (see below).

Enjoy the following food & beverage package at \$40 per person, or ask your sales manager about plated meals and other food & beverage enhancements.

- Chef's choice of 3 hors d' oeuvres (2 hot, 1 cold)
- Bruschetta and hummus
- Pita bread, garlic bread, crudités
- Open bar offering beer, wine, soda, water
- Chef's choice dessert

All prices and minimums are plus tax & service charge.

***Total price is the listed cost of the event plus \$40 per person for the food and beverage package.**



MURDER MYSTERY DINNERS

FACILITATED BY WITHOUT A CUE PRODUCTIONS | EVENT DURATION DEPENDS ON GUEST COUNT & SHOW (SEE BELOW) | MINIMUM 6 PEOPLE

You don't have to go to Broadway for live entertainment when you can stay at Normandy Farm and Blue Bell Country Club and enjoy dinner and a show! From mini mysteries to full blown original productions you will be challenged by the "who done it" theme while dining on your favorite buffet or plated dinner selections.



NOTES OF INTEREST

Time: The actual "show" is 1.5 hours. The performance occurs either before or after meal time, not during. Actors interact with guests prior to the meal to get their creative juices flowing! Select which show works best for your group based on number of guests.

6-20 guests: **Mini Mystery**

(2 Actors) \$680.00

21-50 guests: **Slaying at the Sapphire Club**

(3 Actors) \$960.00

51-150 guests: **Custom Murder Mystery**

(5 Actors) \$1,680.00

Enjoy the following food & beverage package at \$40 per person, or ask your sales manager about plated meals and other food & beverage enhancements.

- Chef's choice of 3 hors d' oeuvres (2 hot, 1 cold)
- Bruschetta and hummus
- Pita bread, garlic bread, crudités
- Open bar offering beer, wine, soda, water
- Chef's choice dessert

All prices and minimums are plus tax & service charge.

***Total price is the listed cost of the show selected plus \$40 per person for the food and beverage package.**

AXE THROWING

FACILITATED BY THROWHOUSE
3 HOUR EVENTS / MINIMUM: 15 GUESTS
MINIMUM FOR EVENT; \$830.00

Looking to add some skill (and thrill) to your next meeting? No need to leave the Farm because the axes are coming to us! Imagine the thrill of launching an axe at a wooden target and hitting the bulls eye! You and your mates will spend two hours becoming intimate with a 1.5 lb piece of whirling wood and metal as you learn, practice, and ultimately master the art of axe throwing. All participants must wear closed toe shoes, present a valid Photo ID, and sign a general liability waiver. During your event, enjoy a selection of beverages as well as our chef's choice hors d' oeuvres.



NOTES OF INTEREST

Cost: \$830.00 per lane

Each lane consists of: 2 targets

Max participants per lane: 15

Axe instructors per lane: 1

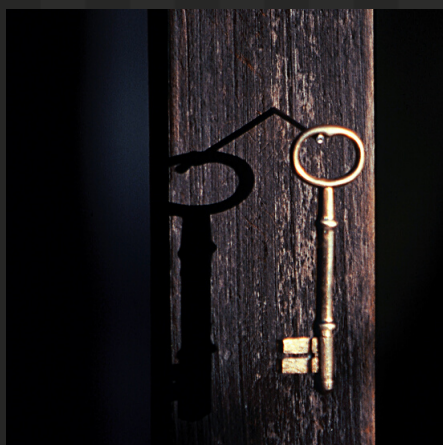
***Total price is the listed cost of the lane or lanes plus \$40 per person for the food and beverage package.**

Enjoy the following food & beverage package at \$40 per person, or ask your sales manager about plated meals and other food & beverage enhancements.

- Chef's choice of 3 hors d' oeuvres (2 hot, 1 cold)
- Bruschetta and hummus
- Pita bread, garlic bread, crudités
- Open bar offering beer, wine, soda, water
- Chef's choice dessert

All prices and minimums are plus tax & service charge.

ESCAPE THE ROOM



SPECIFICATIONS

EVENT FACILITATION BY SAGE! (Super Awesome Great Escape)

3 HOUR EVENTS / MIN: 8 GUESTS / MAX: 10 GUESTS / PRICING: \$525 PER ROOM

Have a large group? Eccentric Billionaire, Milton B. Lemons is giving away \$1M to any team who can gain access to his briefcase within 75 minutes. Take The Billionaire Test:

3 HOUR EVENTS / MIN: 24 / MAX: 80 GUESTS / PRICING: \$5,750 PER EXPERIENCE

BREAK OUT!!

Escape room team building is a new trend that's quickly catching fire. Escape rooms are immersive role-playing games. Players are "locked" inside a room and tasked with solving the room's mystery within a set amount of time. This unique activity is now offered on-site so there is no need to leave the property. Each escape room can accommodate teams of 6-8 and there are several escape themes to choose from. We can customize aspects of your escape experience to add personal touches relevant to your organization.

Please note: The event begins with 20 minutes of instruction. You have one hour to escape. There is a 15 minute debrief following the event. SAGE! can run two identical rooms (8 players each) at the same time to accommodate larger groups and to create friendly competition between the teams.

Enjoy the following food & beverage package at \$40 per person, or ask your sales manager about plated meals and other food & beverage enhancements.

- Chef's choice of 3 hors d' oeuvres (2 hot, 1 cold)
- Bruschetta and hummus
- Pita bread, garlic bread, crudités
- Open bar offering beer, wine, soda, water
- Chef's choice dessert

All prices and minimums are plus tax & service charge.

***Total price is the listed cost of the event plus \$40 per person for the food and beverage package.**



GAME SHOW

FACILITATED BY EBE ENTERTAINMENT
 3 HOUR EVENTS / PRICING:
 21+ GUESTS: \$1,860.00
 LESS THAN 21 GUESTS: \$1,250.00

Get transported into some of today's most popular game shows such as Family Feud, Jeopardy, Deal or No Deal, Hollywood Squares, and more! Just like you see on TV, these events feature a charismatic host to introduce players to the audience and keep the show moving with jokes and commentary. Participants are questioned on their knowledge of pop culture as well as trivia about the guest of honor or corporation hosting the party. These shows bring high visual impact to your event with music, video, and wireless buzzers with lockout functions. Guests will get caught up in the excitement while rooting for their friends and participating in the audience.

Looking for something a little different? Ask about other EBE enhancements such as casino night.

Enjoy the following food & beverage package at \$40 per person, or ask your sales manager about plated meals and other food & beverage enhancements.

- Chef's choice of 3 hors d' oeuvres (2 hot, 1 cold)
- Bruschetta and hummus
- Pita bread, garlic bread, crudité
- Open bar offering beer, wine, soda, water
- Chef's choice dessert

All prices and minimums are plus tax & service charge.

***Total price is the listed cost of the event plus \$40 per person for the food and beverage package.**



ARTISTIC EXPRESSIONS

Charitable Option Available!

A custom painting is the perfect way to create a unique team building with a memorable takeaway. AR Workshop will provide all of the tools, materials, and hands-on instruction. Sip your favorite beverage and have fun letting your inner craftinista shine! Leave with your finished project and enjoy your new stylish custom decor!

FACILITATED BY AR WORKSHOP
3 HOUR EVENT / MINIMUM 7 GUESTS
PRICING PER PERSON:

1. **WOOD PHOTO FRAME** (12" Round Lazy Susan, or (2) 6x16 Mini Tray with Handles): \$64.00
2. **PLANK WOOD SIGN, PEDESTAL TRAY, CENTERPIECE BOX, or WOOD CLOCK PLANK** (multiple sizes available): \$82.00
3. **WOOD TRAY** (14"x24 Plank or Framed), **PORCH SIGN** (12"x48"), or **CENTERPIECE BOX** (32"): \$104.00
4. **CHUNKY KNIT BLANKET**: \$110.00

**Great charitable option in which blankets are donated to a local shelter!*



Enjoy the following food & beverage package at \$40 per person, or ask your sales manager about plated meals and other food & beverage enhancements.

- Chef's choice of 3 hors d' oeuvres (2 hot, 1 cold)
- Bruschetta and hummus
- Pita bread, garlic bread, crudités
- Open bar offering beer, wine, soda, water
- Chef's choice dessert

All prices and minimums are plus tax & service charge.





Floral Centerpiece

DESIGN WORKSHOP

Our in-house floral & event design studio, Willow & Thistle, will be sharing their passion as they guide you step-by-step through creating a custom centerpiece. Their designer will provide the instruction while you provide the creativity. Explore the flower fridge for seasonal greenery and florals and enjoy assorted cheese and wine while you work. Leave the workshop with a beautiful arrangement to display in your home or gift to a loved one.

This workshop is perfect for birthday parties, bridal & baby showers, corporate teambuildings, and much more.

FACILITATED BY WILLOW & THISTLE
1 HOUR INSTRUCTION / MIN 10 GUESTS
INQUIRE ABOUT AVAILABLE DATES
PRICING PER PERSON:

FLORAL ARRANGEMENT

(base, oasis, fresh flowers): \$69.00

Enjoy the following food & beverage package at \$40 per person, or ask your sales manager about plated meals and other food & beverage enhancements.

- Chef's choice of 3 hors d' oeuvres (2 hot, 1 cold)
- Bruschetta and hummus
- Pita bread, garlic bread, crudités
- Open bar offering beer, wine, soda, water
- Chef's choice dessert

All prices and minimums are plus tax & service charge.



**"GREAT THINGS IN
BUSINESS ARE NEVER
DONE BY ONE PERSON;
THEY'RE DONE BY A
TEAM OF PEOPLE."
– STEVE JOBS**

Normandy Farm

BLUE BELL
Country Club